

HM\_BTP  
**STANDARD DUCT**



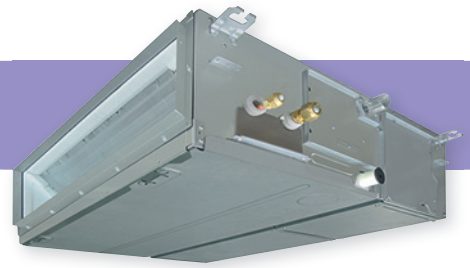
Whatever the shape of the room, this flexible model ensures a uniform temperature and air distribution for optimal end user comfort.

**Adaptability**

- Up to 150Pa available pressure: thanks to DC fan motor.
- Flexible design, allows the inlet air configuration to be configured between the standard rear inlet design or as an alternative, from the underside of the unit. There is also a provision for a fresh air intake supply via a pre-punched knockout hole.
- Compact and thin chassis, measuring just 275mm in height.

**Easy to install**

- Built-in high-lift drain pump.
- PC board panel easily accessible from the side of the unit.
- Optional air discharge spigot.



SCOP MAX



4.85  
A++

CAPACITY



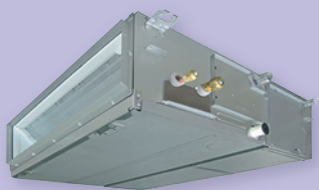
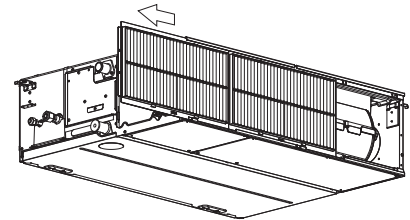
5kW > 16kW

OPERATION



-27°C > +52°C

Simplify filter maintenance with live status to know exactly when they need to be cleaned!



**INDOOR UNITS**

- RAV-HM561BTP-E/TR
- RAV-HM801BTP-E/TR
- RAV-HM901BTP-E/TR
- RAV-HM1101BTP-E/TR
- RAV-HM1401BTP-E/TR
- RAV-HM1601BTP-E/TR

**SDI**



**OUTDOOR UNITS**

- RAV-GP561ATW-E/TR
- RAV-GP801ATW-E/TR
- RAV-GP1101AT(8)-E/TR
- RAV-GP1401AT(8)-E(1)/TR(1)
- RAV-GP1601AT8-E/TR

**DI**



- RAV-GM562ATP-E/TR
- RAV-GM802ATW-E/TR
- RAV-GM902ATW-E/TR
- RAV-GM1102AT(8)W-E/TR
- RAV-GM1402AT(8)W-E/TR
- RAV-GM1602AT(8)W-E/TR

**Dlc**



- RAV-GV801ATP-E/TR
- RAV-GV1101AT(8)P-E/TR
- RAV-GV1401AT(8)P-E/TR
- RAV-GV1601AT(8)P-E/TR



**REMOTE CONTROLS**

- RBC-AXU31-E
- RBC-AWSU52-E
- RBC-AMSU52-E
- RBC-AMTU31-E
- RBC-ASCU11-E

**STANDARD DUCT**

**STANDARD DUCT Performance data with Super Digital Inverter Series 1 1Ph & 3Ph**

Outdoor unit	RAV-	GP561ATW-E/TR	GP801ATW-E/TR	GP1101AT-E/TR	GP1401AT-E1/TR1	GP1101AT8-E/TR	GP1401AT8-E/TR	GP1601AT8-E/TR
Indoor unit	RAV-	HM561BTP-E/TR	HM801BTP-E/TR	HM1101BTP-E/TR	HM1401BTP-E/TR	HM1101BTP-E/TR	HM1401BTP-E/TR	HM1601BTP-E/TR
<b>Cooling capacity</b>	<b>kW</b>	<b>5.0</b>	<b>7.1</b>	<b>10.0</b>	<b>10.0</b>	<b>12.5</b>	<b>12.5</b>	<b>14.0</b>
Cooling range (min. - max.)	kW	1.2 - 5.6	1.9 - 8.0	3.1 - 12.0	2.6 - 12.0	3.1 - 14.0	2.6 - 14.0	2.6 - 16.0
Power input (min. - rated - max.)	kW	C 0.19 - 1.52 - 1.99	0.26 - 1.63 - 3.20	0.65 - 2.40 - 3.63	0.66 - 2.58 - 4.01	0.65 - 3.57 - 3.97	0.66 - 3.81 - 4.89	0.66 - 4.49 - 6.50
EER		3.29	4.36	4.17	3.88	3.50	3.28	3.12
SEER		5.81	7.86	7.19	6.10	6.77	6.02	5.81
Energy efficiency class	C	A+	A++	A++	A+	-	-	-
Seasonal electricity consumption	kWh/a	C 301	316	486	574	1107	1245	1444
<b>Heating capacity</b>	<b>kW</b>	<b>5.6</b>	<b>8.0</b>	<b>11.2</b>	<b>11.2</b>	<b>14.0</b>	<b>14.0</b>	<b>16.0</b>
Heating range (min. - max.)	kW	0.9-7.4	1.3 - 11.3	2.6 - 13.0	2.4 - 15.6	2.6 - 16.5	2.4 - 18.0	2.4 - 19.0
Power input (min. - rated - max.)	kW	H 0.16 - 1.61 - 2.76	0.20 - 1.85 - 3.55	0.47 - 2.73 - 3.38	0.53 - 2.76 - 4.42	0.47 - 3.63 - 4.43	0.53 - 3.66 - 5.71	0.53 - 4.57 - 6.96
COP	W/W	3.48	4.32	4.10	4.06	3.86	3.83	3.50
SCOP		4.27	4.85	4.30	4.19	4.29	3.99	3.96
Energy efficiency class	H	A+	A++	A+	A+	-	-	-
Seasonal electricity consumption	kWh/a	H 1245	1472	2997	3606	3133	4143	4238

**STANDARD DUCT Performance data with Digital Inverter Series 2 1Ph & 3Ph**

**PRELIMINARY DATA**

Outdoor unit	RAV-	GM562ATP-E/TR	GM802ATW-E/TR	GM902ATW-E/TR	GM1102ATW-E/TR	GM1102AT8W-E/TR	GM1402ATW-E/TR	GM1402AT8W-E/TR	GM1602ATW-E/TR	GM1602AT8W-E/TR
Indoor unit	RAV-	HM561BTP-E/TR	HM801BTP-E/TR	HM901BTP-E/TR	HM1101BTP-E/TR	HM1101BTP-E/TR	HM1401BTP-E/TR	HM1401BTP-E/TR	HM1601BTP-E/TR	HM1601BTP-E/TR
<b>Cooling capacity</b>	<b>kW</b>	<b>5.0</b>	<b>6.7</b>	<b>8.0</b>	<b>9.5</b>	<b>9.5</b>	<b>12.1</b>	<b>12.1</b>	<b>14.0</b>	<b>14.0</b>
Cooling range (min. - max.)	kW	1.5 - 5.6	1.9 - 8.0	1.9 - 8.8	3.0 - 11.2	3.0 - 11.2	3.0 - 13.2	3.0 - 13.2	3.0 - 15.0	3.0 - 15.0
Power input (min. - rated - max.)	kW	C 0.31 - 1.83 - 2.05	0.33 - 2.02 - 2.77	0.33 - 2.39 - 2.97	0.64 - 2.60 - 3.21	0.68 - 2.56 - 3.17	0.64 - 4.01 - 4.52	0.68 - 3.94 - 4.48	0.64 - 5.26 - 6.00	0.68 - 5.14 - 5.90
EER		2.73	3.32	3.35	3.65	3.71	3.02	3.07	2.66	2.72
SEER		5.80	6.37	6.75	6.40	6.00	6.15	5.87	5.90	5.80
Energy efficiency class	C	A+	A++	A++	A++	A+	-	-	-	-
Seasonal electricity consumption	kWh/a	C 302	368	415	519	554	1180	1236	1423	1448
<b>Heating capacity</b>	<b>kW</b>	<b>5.3</b>	<b>7.7</b>	<b>8.6</b>	<b>11.2</b>	<b>11.2</b>	<b>13.0</b>	<b>13.0</b>	<b>16.0</b>	<b>16.0</b>
Heating range (min. - max.)	kW	1.5 - 6.3	1.6 - 9.0	1.6 - 9.9	3.0 - 13.0	3.0 - 13.0	3.0 - 16.0	3.0 - 16.0	3.0 - 17.0	3.0 - 18.0
Power input (min. - rated - max.)	kW	H 0.31 - 1.62 - 2.47	0.31 - 2.04 - 2.66	0.31 - 2.15 - 2.67	0.74 - 2.91 - 3.42	0.78 - 2.87 - 3.38	0.74 - 3.55 - 4.62	0.78 - 3.50 - 4.58	0.74 - 4.73 - 5.64	0.78 - 4.66 - 6.92
COP	W/W	3.27	3.77	4.00	3.85	3.90	3.66	3.71	3.38	3.43
SCOP		4.11	4.30	4.30	4.00	3.92	3.92	3.84	4.05	3.96
Energy efficiency class	H	A+	A+	A+	A+	A	-	-	-	-
Seasonal electricity consumption	kWh/a	H 954	1660	2050	2937	2999	2998	3061	2901	2966

**STANDARD DUCT Performance data with Digital Inverter Classic Series 1 1Ph & 3Ph**

Outdoor unit	RAV-	GV801ATP-E/TR	GV1101ATP-E/TR	GV1101AT8P-E/TR	GV1401ATP-E/TR	GV1401AT8P-E/TR	GV1601ATP-E/TR	GV1601AT8P-E/TR
Indoor unit	RAV-	HM801BTP-E/TR	HM1101BTP-E/TR	HM1101BTP-E/TR	HM1401BTP-E/TR	HM1401BTP-E/TR	HM1601BTP-E/TR	HM1601BTP-E/TR
<b>Cooling capacity</b>	<b>kW</b>	<b>6.7</b>	<b>9.5</b>	<b>9.5</b>	<b>11.5</b>	<b>12.1</b>	<b>13.0</b>	<b>13.0</b>
Cooling range (min. - max.)	kW	1.5-8.0	3.0-11.2	3.0-11.2	3.0-12.0	3.0-14.0	3.0-14.0	3.0-15.0
Power input (min. - rated - max.)	kW	C 2.30	3.17	3.06	4.70	4.90	5.40	5.40
EER		2.91	3.00	3.10	2.45	2.47	2.41	2.41
SEER		5.1	5.1	5.3	5.1	5.1	4.90	4.90
Energy efficiency class	C	A	A	A	A	0.0	0.0	0.0
Seasonal electricity consumption	kWh/a	C 460	652	628	789	1423	1590	1591
<b>Heating capacity</b>	<b>kW</b>	<b>7.0</b>	<b>10.0</b>	<b>10.0</b>	<b>11.9</b>	<b>12.3</b>	<b>13.5</b>	<b>13.5</b>
Heating range (min. - max.)	kW	1.5-9.0	3.0-13.0	3.0-13.0	3.0-16.0	3.0-16.0	3.0-18.0	3.0-18.0
Power input (min. - rated - max.)	kW	H 2.33	3.00	2.94	3.90	4.10	4.00	4.00
COP	W/W	3.0	3.3	3.40	3.05	3.00	3.38	3.38
SCOP		4.00	3.80	3.80	3.80	3.80	4.15	4.15
Energy efficiency class	H	A+	A	A	A	-	-	-
Seasonal electricity consumption	kWh/a	H 1680	2800	2800	2874	2874	2700	2693

**STANDARD DUCT Physical data indoor**

Indoor unit	RAV-	HM561BTP-E/TR	HM801BTP-E/TR	HM901BTP-E/TR	HM1101BTP-E/TR	HM1401BTP-E/TR	HM1601BTP-E/TR
Air flow (H/L)	m³/h - l/s	800/480 - 222/133	1200/750 - 333/200	1700/1000 - 472/278	2100/1260 - 583/350	2100/1260 - 583/350	2100/1260 - 583/350
Sound pressure level (H-M-L)*	dB(A)	33-29-25	34-30-26	37-33-30	40-36-33	40-36-33	40-36-33
Sound power level (H-M-L)**	dB(A)	55-51-46	55-51-46	60-55-51	63-58-54	63-58-54	63-58-54
Dimensions (HxWxD)	mm	275 x 700 x 750	275 x 1000 x 750	275 x 1400 x 750	275 x 1400 x 750	275 x 1400 x 750	275 x 1400 x 750
Weight	kg	23	31	41	41	41	41
External static pressure (stand/upper limit)	Pa	30/150	30/150	40/150	40/150	50/150	50/150

C = cooling mode  
H = heating mode  
\*bottom air inlet  
\*\*back air inlet

▶ LIGHT COMMERCIAL